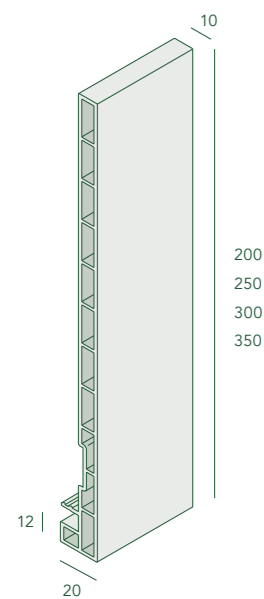


# Productoverzicht

Produktübersicht | Product overview

## Dakrandpaneel

Dachrandpaneele | Roofline panel

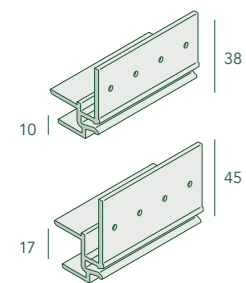


Nr. 2821 - 200 mm  
 Nr. 2825 - 250 mm  
 Nr. 2831 - 300 mm  
 Nr. 2835 - 350 mm

## Montageprofilen

Überstand Startprofil | Overhang start profile

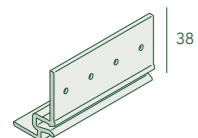
Nr. 2867 - 10 mm  
 Nr. 2877 - 17 mm



## Montageprofil boeiboord

Dachrand Startprofil | Roofline start profile

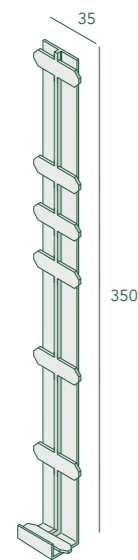
Nr. 2887



## Tussenstuk

Zwischenstück | Spacer joint

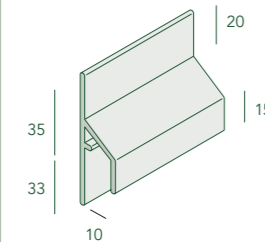
Nr. 2848



## Trim/kraal aansluitprofiel

Anschlussprofil | Trim profile

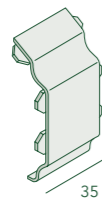
Nr. 2843



## Tussenstuk sierlijst

Zwischenstück | Spacer joint

Nr. 2853

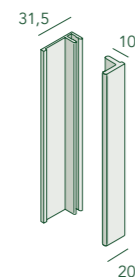


## Basis eindprofiel

Basis Abschlussprofil | Basic ending profile

Nr. 2807

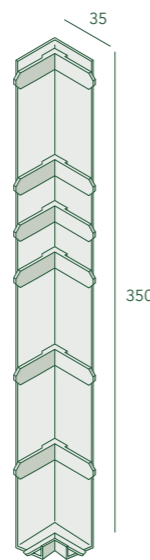
Nr. 2836



## Uitwendig hoekstuk

Außeneckstück | External corner piece

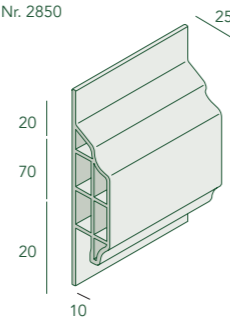
Nr. 2847



## Trim/kraal sierlijst

Anschlussprofil | Trim profile

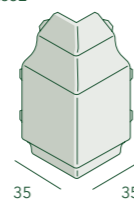
Nr. 2850



## Hoekstuk sierlijst

Eckstück | Corner joint

Nr. 2852



## Verbindingsprofiel

Verbindungsprofil | Connection profile

Nr. 0420



# Montagehandleiding dakrand

Montageanleitung Dachrand  
 Installation manual roofline



**NL**

De garantiebepaling is alleen van kracht wanneer de montage van Keralit dakrandpanelen geheel volgens deze montagehandleiding is uitgevoerd. Voor principedetails kijk op [www.keralit.nl/principedetails](http://www.keralit.nl/principedetails)

**DE**

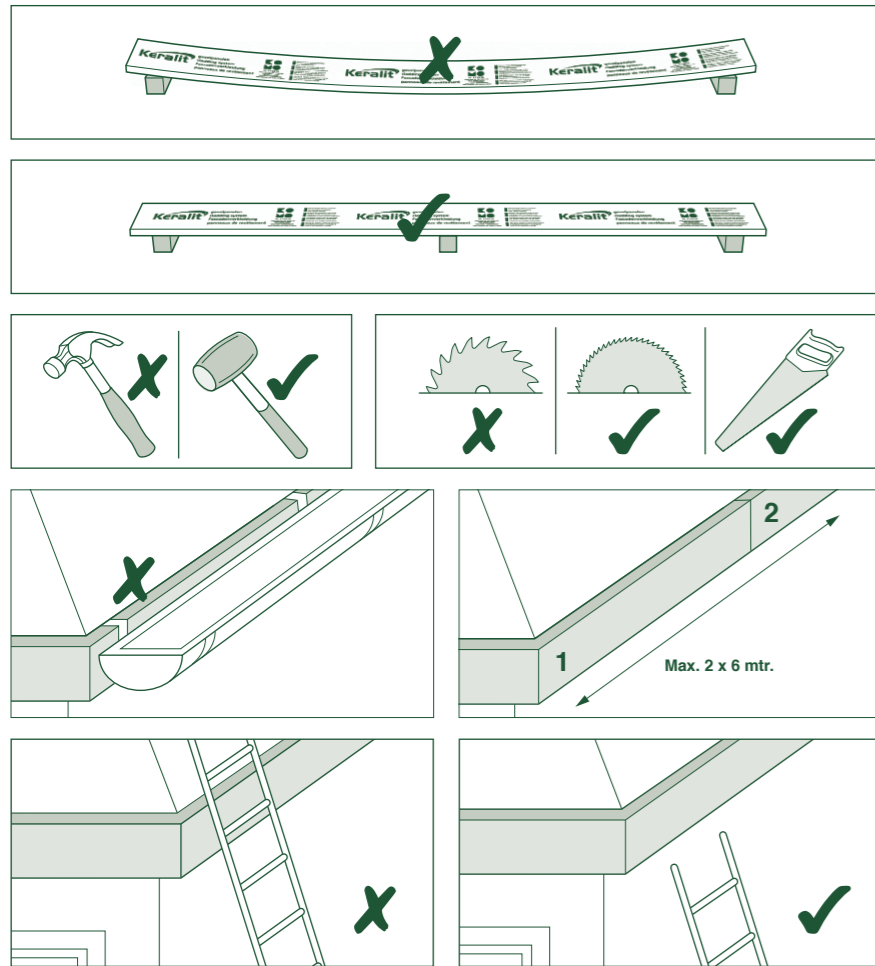
Die Garantie ist nur gültig, wenn die Montage der Keralit Dachrandpaneele ausschliesslich nach dieser Montageanleitung ausgeführt ist. Für Detailzeichnungen siehe auch [www.keralitpaneele.de](http://www.keralitpaneele.de)

**GB**

The guarantee is only valid if the installation of the Keralit roofline panels are installed according to this installation manual. For detailed drawings see [www.keralit.nl](http://www.keralit.nl)

# Verwerkingsvoorschriften

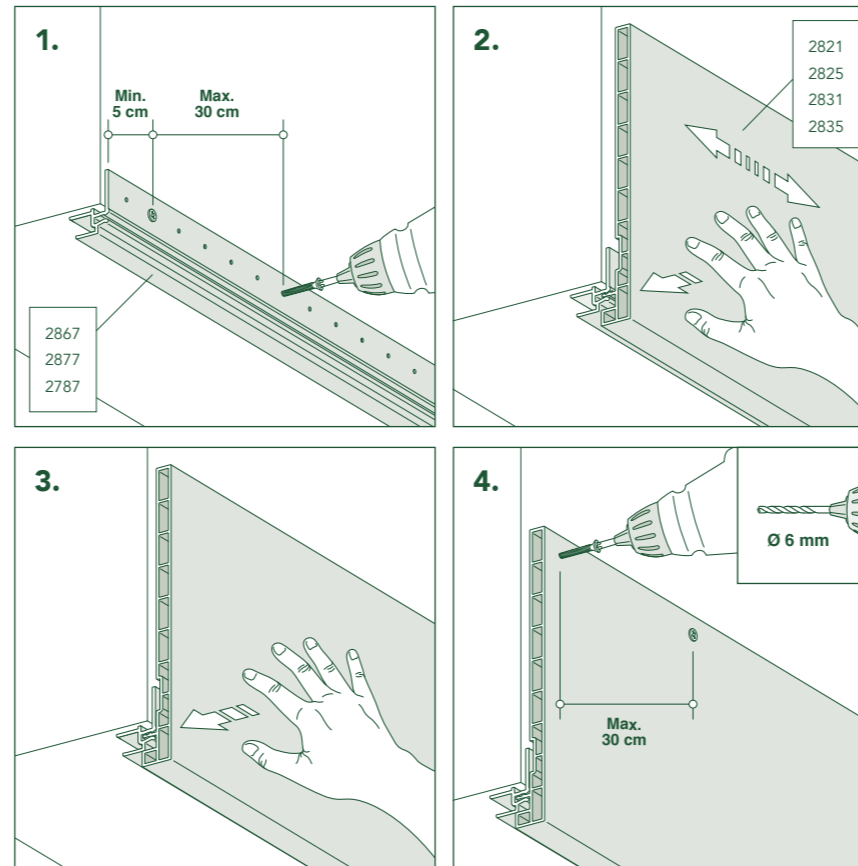
Verarbeitungshinweise | Installation guide



Zorg voor een voldoende ventilerende ondergrond  
Sorgen Sie für ausreichende Lüftung  
Always ensure sufficient ventilation

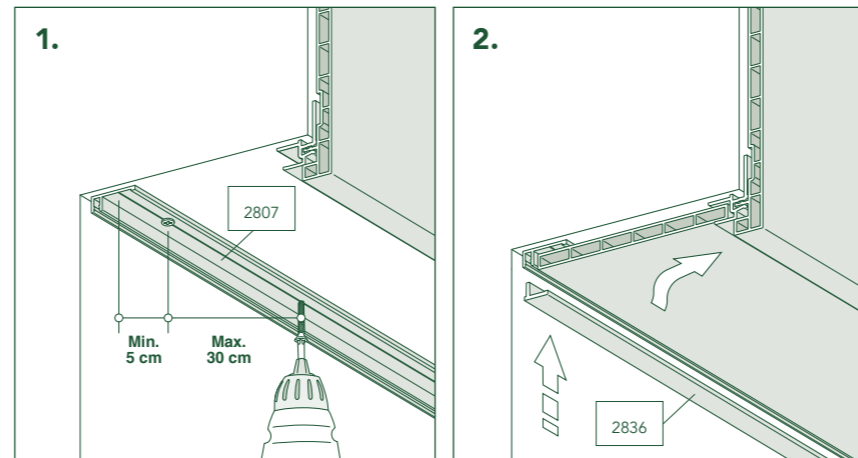
## A Basismontage

Basis Montage | Start mounting



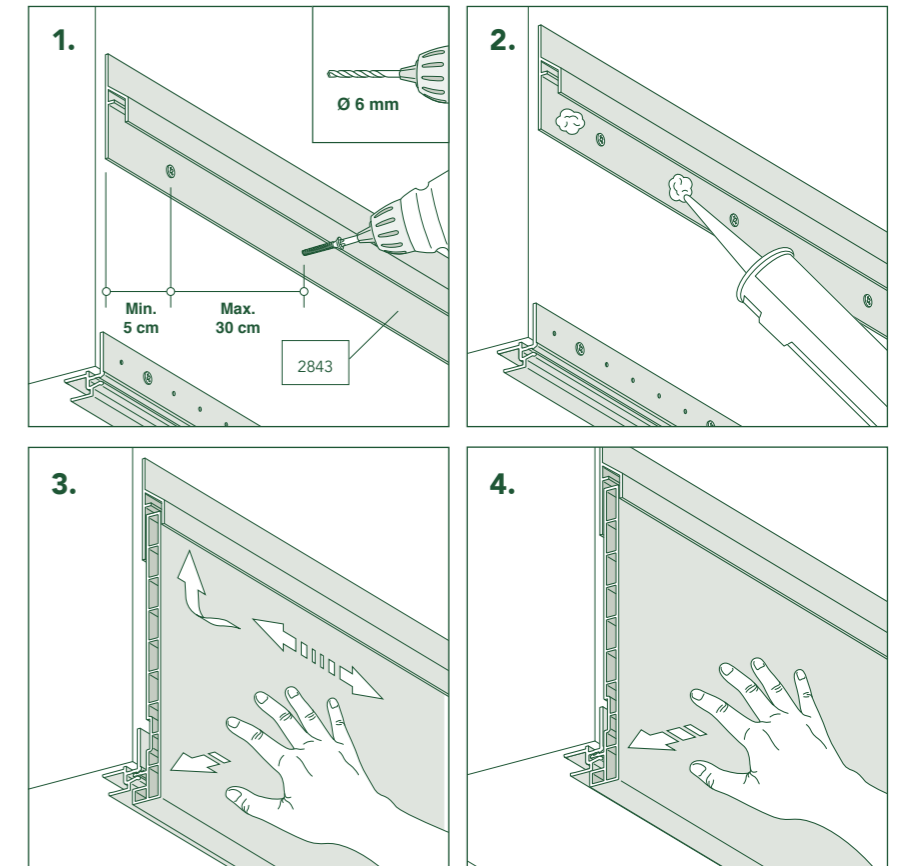
## B Overstek montage

Überstand Montage | Overhang mounting



## C Montage met trimkraal / aansluitprofiel

Montage mit Anschlussprofil | Mounting with trim profile



## D Hoekmontage

Eckmontage | Corner mounting

